

Setting up SMTP Authentication

Introduction

What is SMTP Authentication?

SMTP Authentication is a transparent mechanism for our mail server to verify who you are. The server asks for your user name and password, which your mail program passes on. If you are verified as being a "real" DTEWorld user, then you'll be able to send your message.

Why do we use it?

In the fight to stop Spam (junkmail, Unsolicited Commercial E-mail, etc.), the rules that apply to mail servers acceptance of mail are getting ever stronger.

In order to set up mail clients to use SMTP Authentication, the following instructions should be used. Basically, SMTP Authentication needs to be enabled, and set up to use the email address and password of the user in question. Below are instructions and screen shots for the most common mail software currently in use.

Note: The following instructions must be applied to all email accounts.

[Netscape 7.1](#)

[Step 1](#)

[Step 2](#)

[Eudora 6.0](#)

[Step 1](#)

[Step 2](#)

[Note:](#)

[Outlook XP](#)

[Step 1](#)

[Step 2](#)

[Step 3](#)

[Step 4](#)

[Step 5](#)

[Outlook Express XP](#)

[Step 1](#)

[Step 2](#)

[Step 3](#)

[Step 4](#)

[Mozilla 1.5](#)

[Step 1](#)

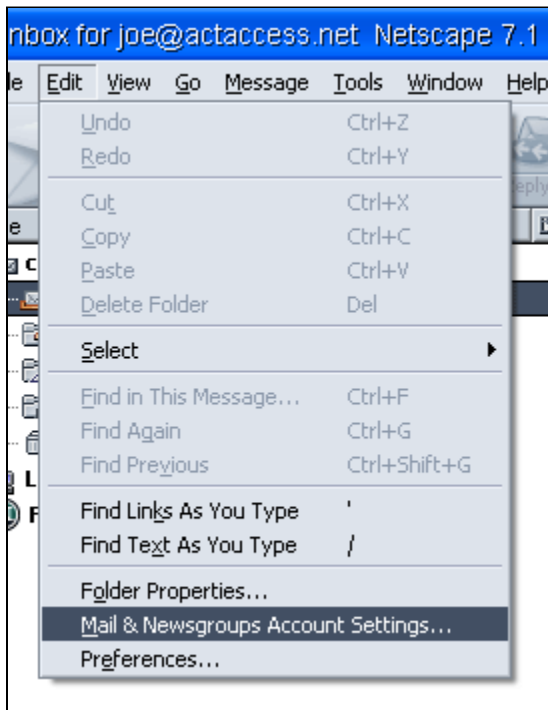
[Step 2](#)

Netscape 7.1

Step 1:

Open the Netscape mail software, then go to Edit -> 'Mail & Newsgroups Account Settings' , as pictured below in Fig 1.

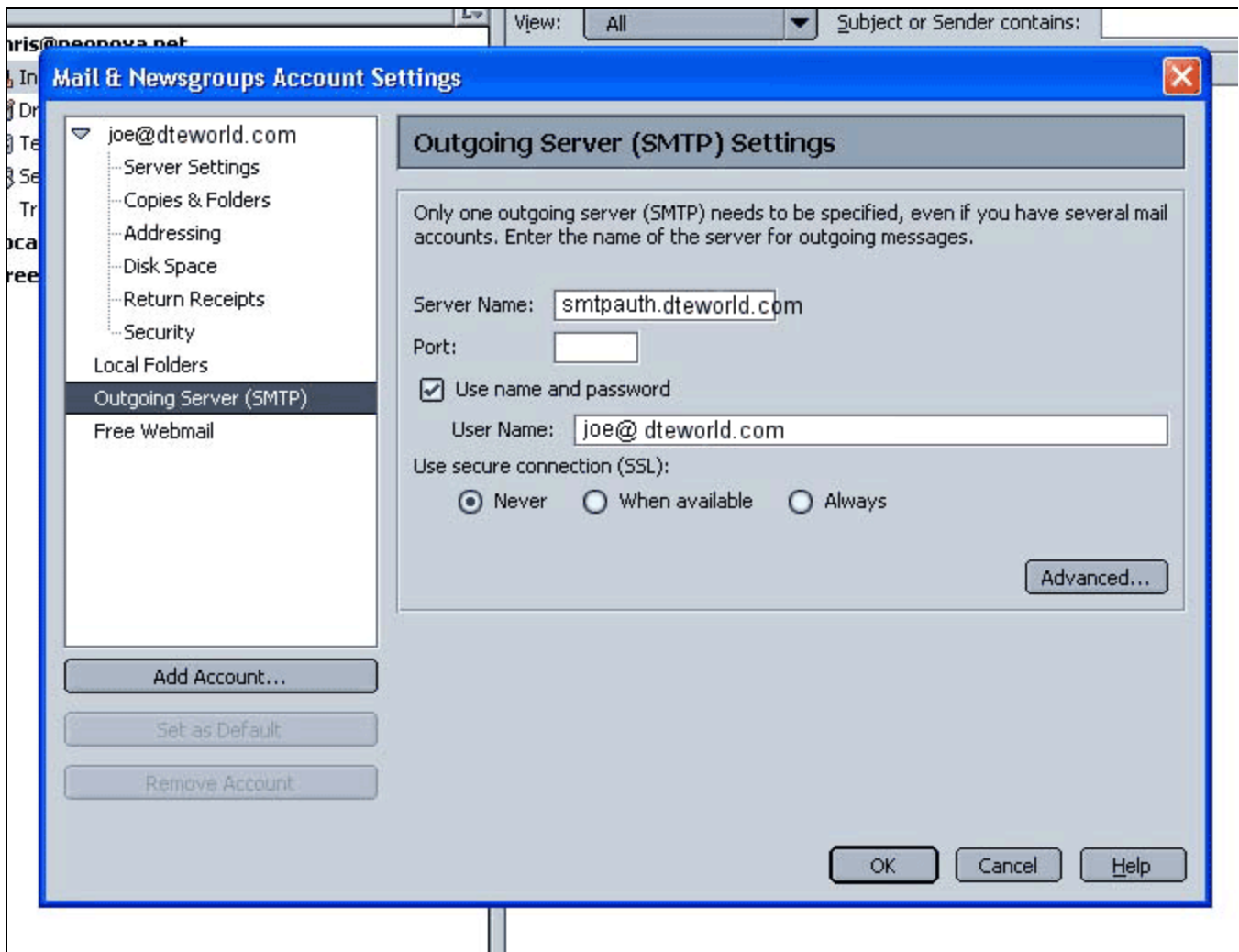
Fig 1.



Step 2:

On the left hand side of the dialog box, select 'Outgoing Server (SMTP)' (see Fig 2). Ensure that the Server Name is set to the correct mail server (smtpauth.dteworld.com), and check the box that is labeled 'Use name and password'. Enter the email address for the user in question in the text box labeled 'User Name'. Click 'OK' to apply the settings.

Fig 2.

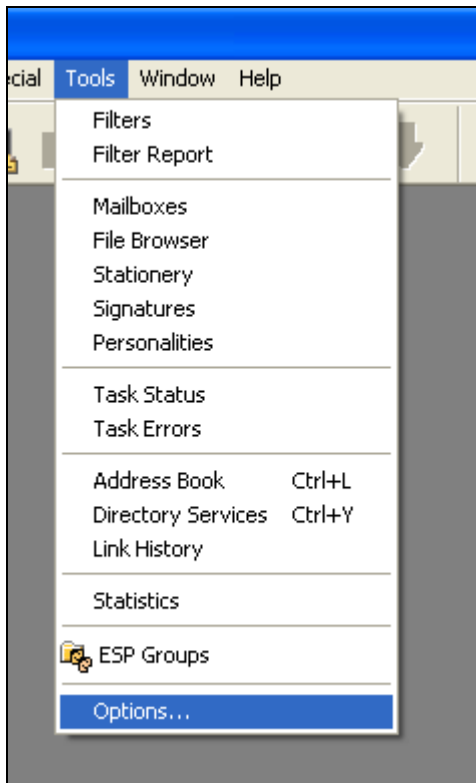


Eudora 6.0

Step 1:

Open Eudora, and go to Tools -> Options as in Fig 3.

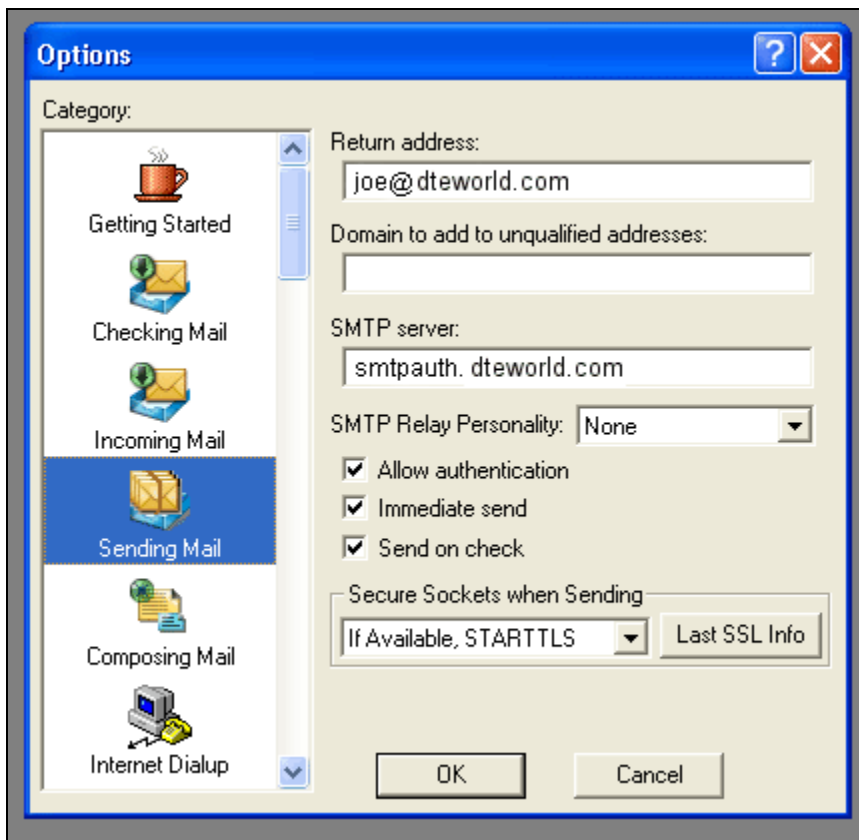
Fig 3.



Step 2:

Select the 'Sending Mail' icon on the left hand side. Double check that the SMTP server is set to your outgoing mail server (smtpauth.dteworld.com). Check the box that is labeled 'Allow Authentication' as in Fig 4.

Fig 4.



Note:

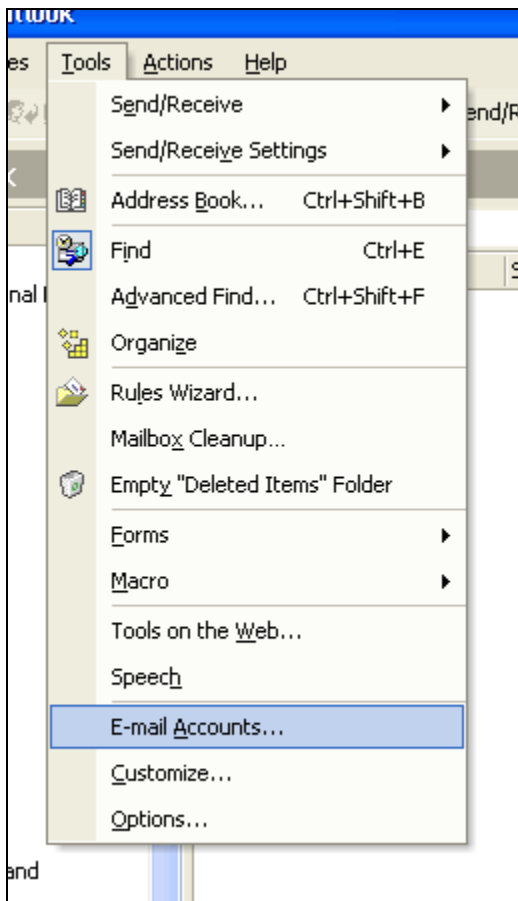
In order for SMTP authentication to work with Eudora, it is important that the user credentials that are entered for the POP server is set to the email address for the username. i.e. ***bob@dteworld.com*** instead of just bob.

Outlook XP

Step 1:

Open Outlook, then go to Tools -> 'E-mail Accounts' as shown in Fig 5.

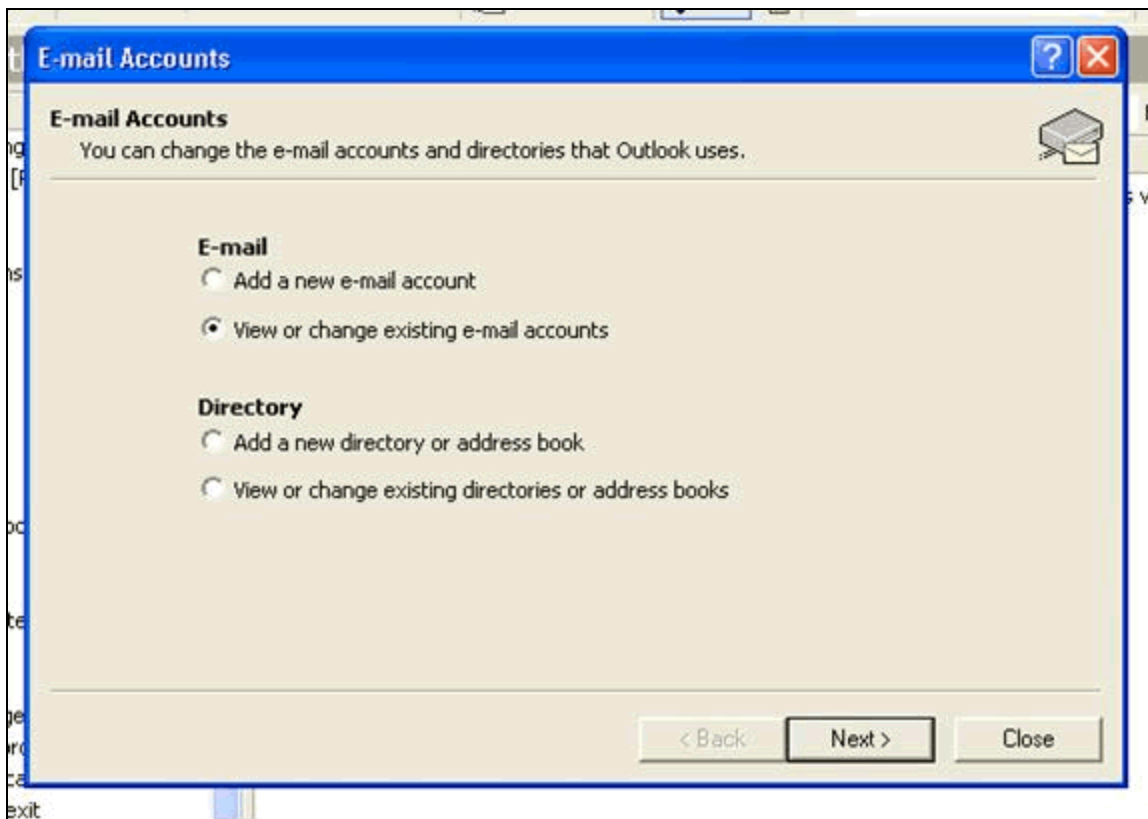
Fig 5.



Step 2:

When the E-mail Accounts dialog box appears, select 'View or change existing e-mail accounts,' then hit 'Next' as shown in Fig 6.

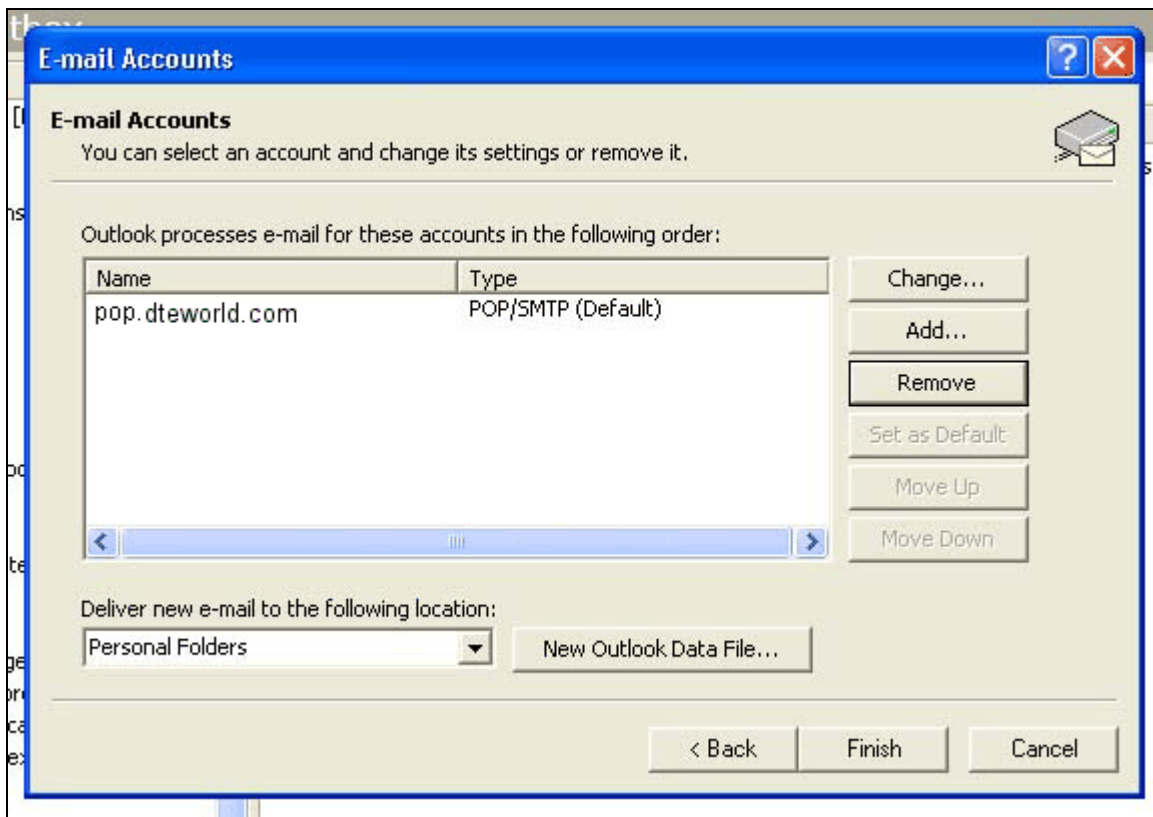
Fig 6.



Step 3:

When the dialog box with your email account(s) list comes up, select the account in question, and then click 'Change' as shown below in Fig 7.

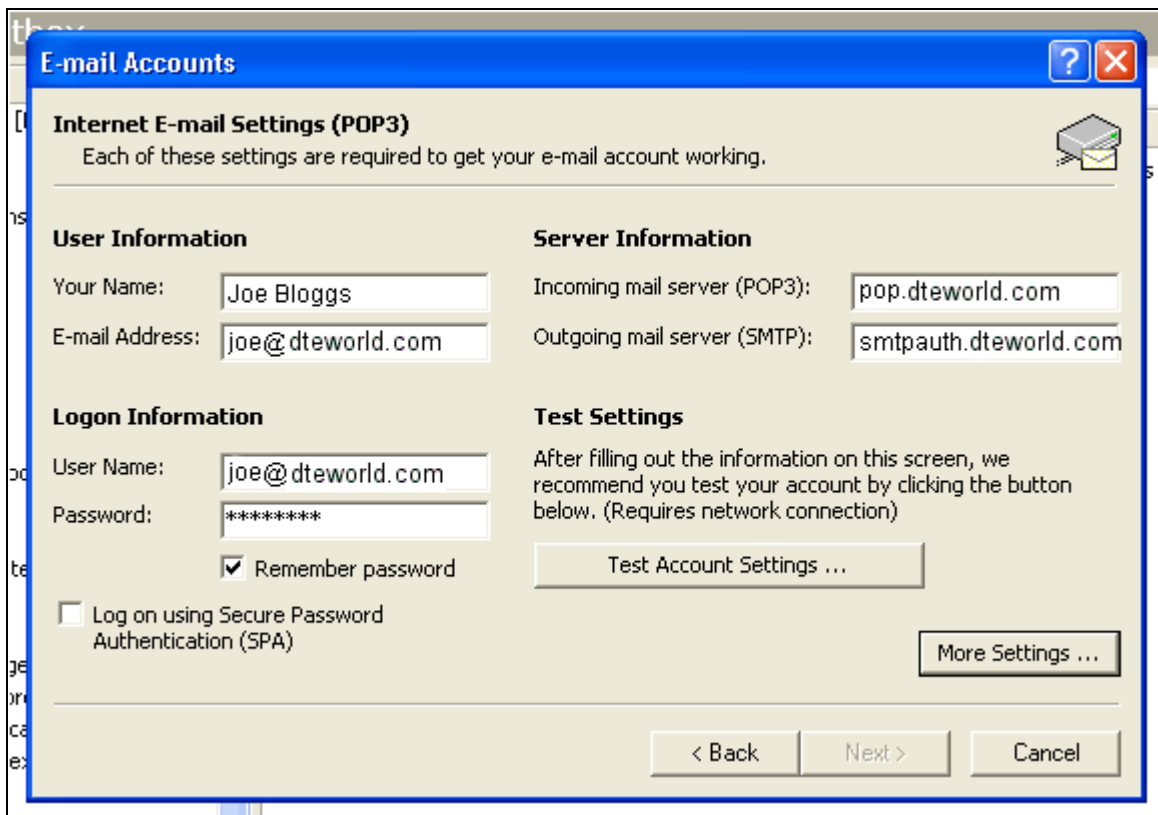
Fig 7.



Step 4:

When the screen for your email account comes up, select the button in the lower right hand corner labeled 'More Settings' as shown below in Fig 8.

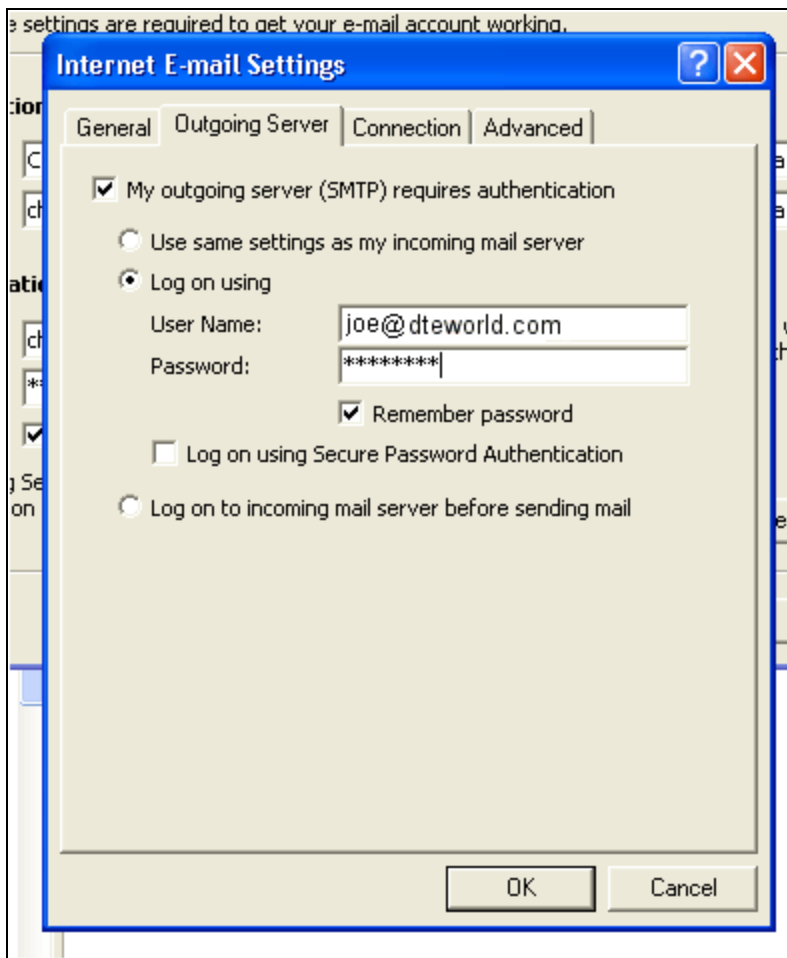
Fig 8.



Step 5:

Select the tab labeled 'Outgoing Server' when the dialog box pictured in Fig 9. appears. Select the box labeled 'My outgoing server (SMTP) requires authentication. Also select the option labeled 'Log on using', and enter the full email address in the 'User Name:' field, and the account password in the 'Password:' field. Hit 'OK' to apply the settings.

Fig 9.

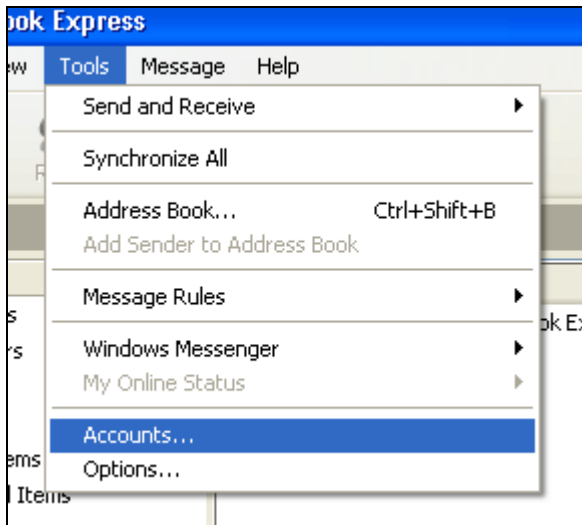


Outlook Express XP

Step 1:

Open Outlook Express and go to Tools -> Accounts as shown below in Fig 10.

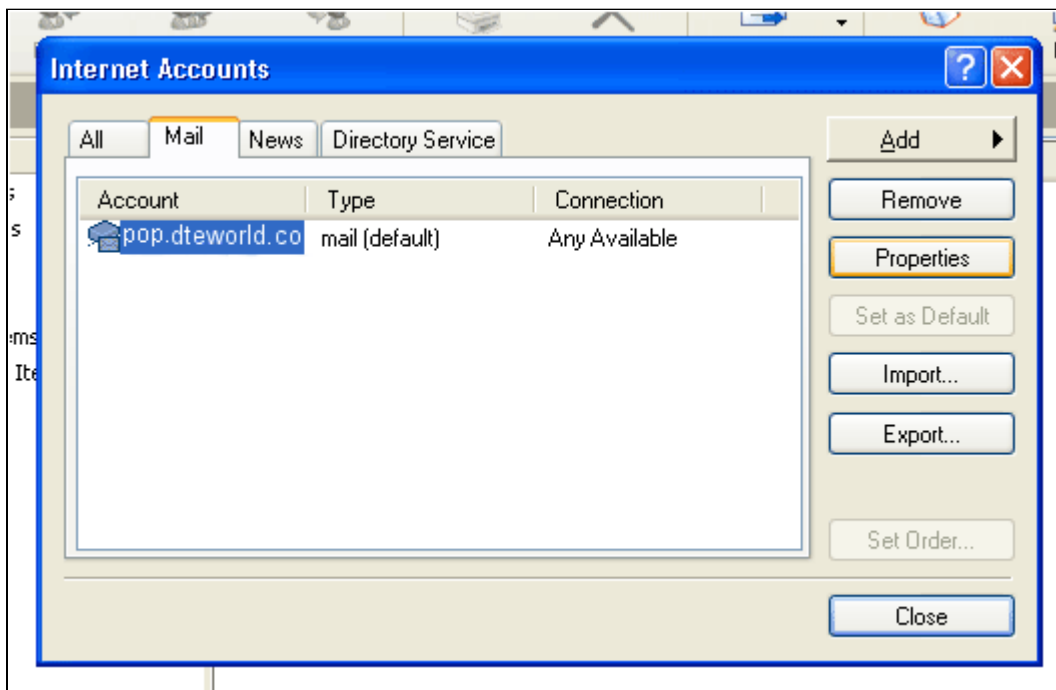
Fig 10.



Step 2:

When the 'Internet Accounts' dialog box appears, make sure the 'Mail' tab is selected, then highlight the account that you would like to change. Click the button labeled 'Properties'. See Fig 11. below.

Fig 11.

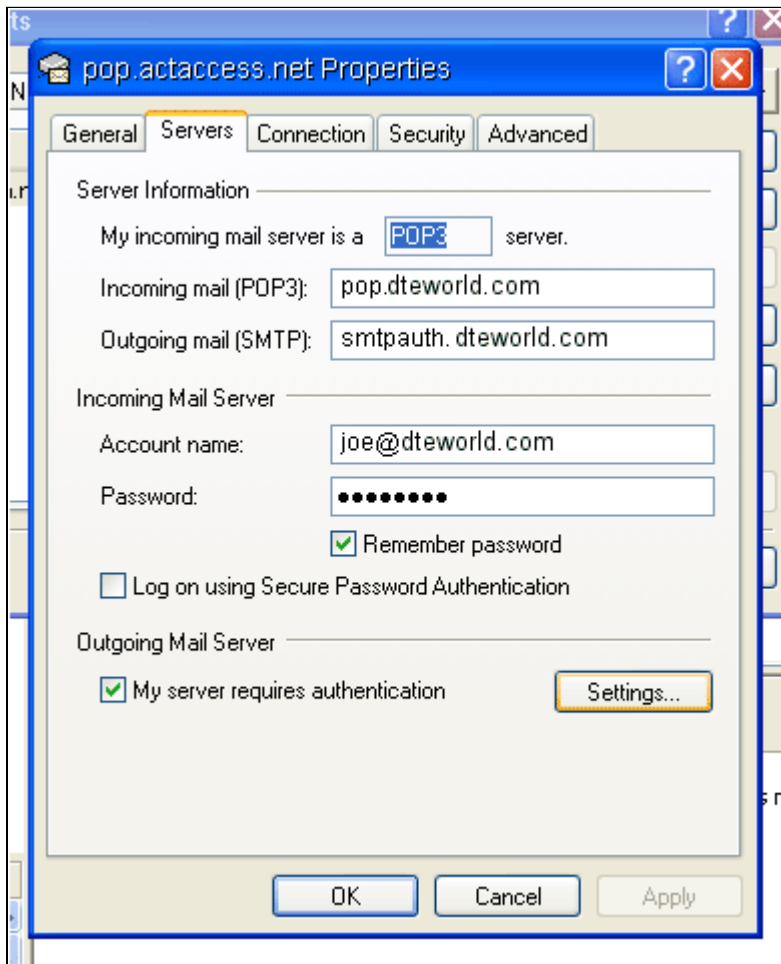


Step 3:

When the 'Properties' tab appears, make sure the 'Servers' tab is selected. Select the box at the bottom of the dialog box labeled 'My server requires authentication', then hit the button next to it

labeled 'Settings' as shown below in Fig 12.

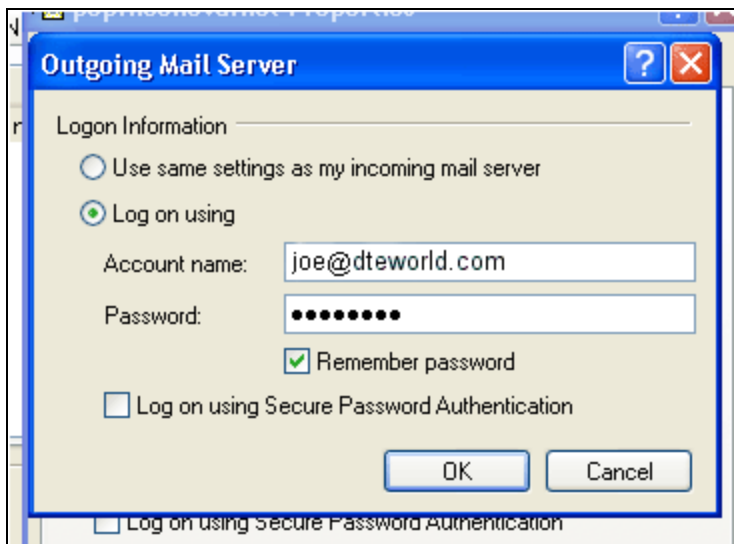
Fig 12:



Step 4:

Select the option labeled 'Log on using', then in the 'Account Name:' field; enter the full email address of the user in question. Put the account password in the 'Password' field, check 'Remember password' then hit 'OK' as shown below in Fig 13. Hit 'Apply', then 'OK' to apply the settings.

Fig 13.

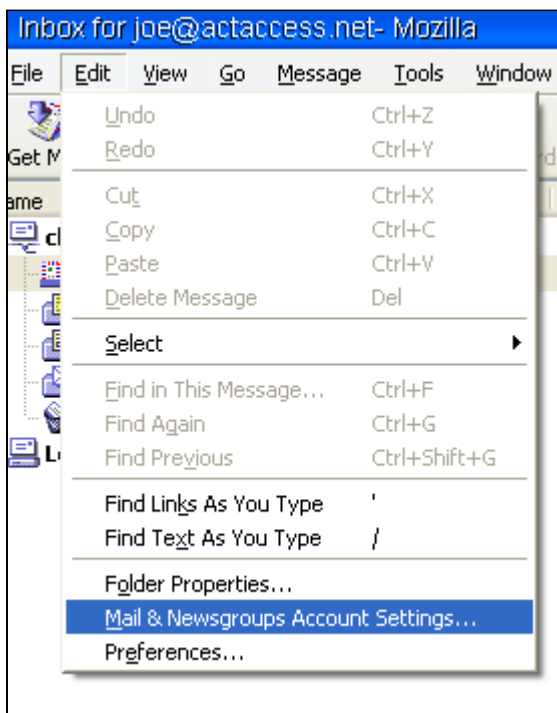


Mozilla 1.5

Step 1:

Open the Mozilla mail client, then go to 'Edit'-> 'Mail & Newsgroups Account Settings' as shown below in Fig 14.

Fig 14.



Step 2:

When the dialog box appears, select the 'Outgoing Server (SMTP)' option on the left hand side. Ensure that the 'Server Name' text box contains the outgoing mail server for the account in question (smtpauth.dteworld.com). Select the checkbox labeled 'Use name and password', and then enter the full email address of the user in the 'User Name' field. See Below in Fig 15. Hit 'Ok' to apply the settings.

Fig 15:

