

DTEWORLD.COM Self Help Installation Guide

Windows 95/98/ME

DTEWORLD.COM Self Help Installation Guide assumes Network Interface Card (NIC) has already been installed.

Before you begin computer setup:

Remove ADSL Modem from package and lay it and all other components out so they may be easily retrieved.

You should have the following:

- DSL Modem
- Power Cord
- Phone Cable
- Ethernet Cable

Place the modem in a location that will allow all attachments to reach the back of your computer as well as be easily accessible to you.

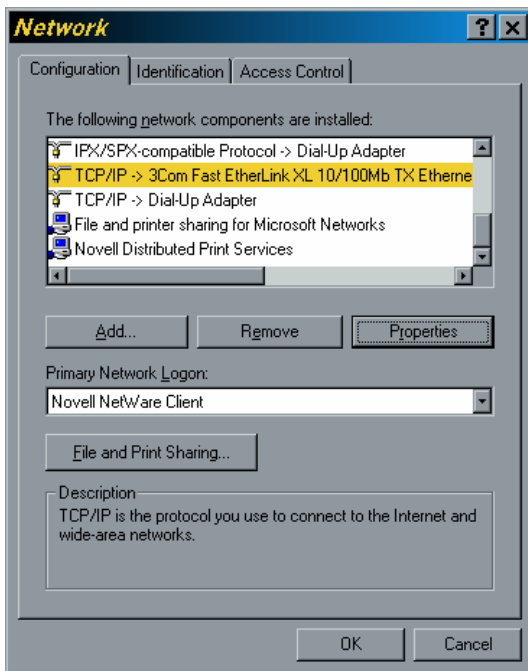
1. Plug power cord into a standard 120V electric receptacle or power strip/surge protector.
2. Plug the other end of the power cord into the appropriate location on the back of the Modem.
3. Plug the telephone cable into the wall jack.
4. Place the other end of the telephone cable into the receptacle on the back of the modem labeled "LINE" or "ADSL."
5. Plug the Ethernet cable into your Network Interface Card (NIC)/Ethernet Port (Oversized phone jack on back of computer). If you are unsure as to whether or not you have a NIC card, refer to your computer's user guide for additional information.
6. Plug the other end of the Ethernet cable into the receptacle on the back of the modem labeled "ENET" or "ETHERNET" or "10/100 Base-T."

Now you are ready to begin configuration of your computer.

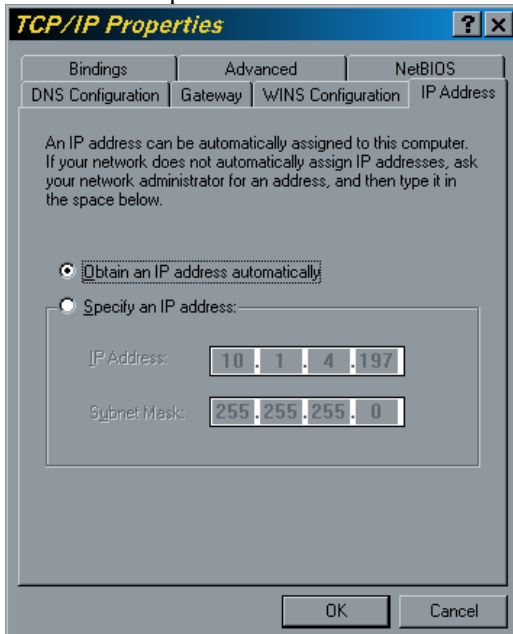
1. Turn on your computer.
2. Locate the shortcut on your computer screen labeled "**Network Neighborhood.**" (For Windows ME users this should be labeled as "**My Network Places.**")
3. Right Click on "**Network Neighborhood.**"
4. Select "**Properties.**"



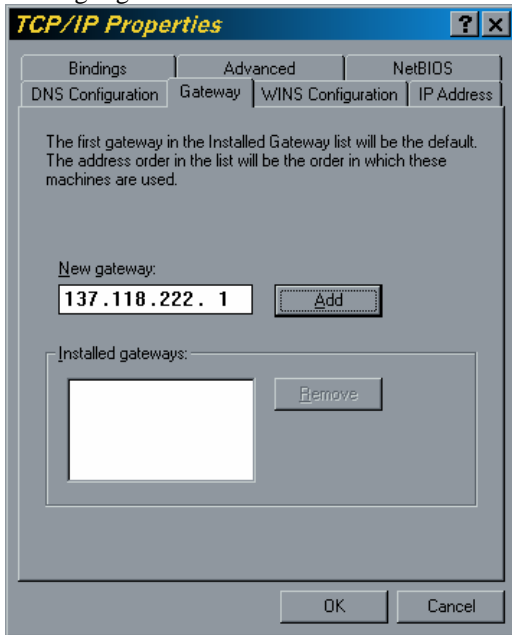
- In this window, locate the entry labeled “TCP/IP -> Name or Type of Ethernet Card Installed” and click it once so it is highlighted.
- Click the “Properties” button.



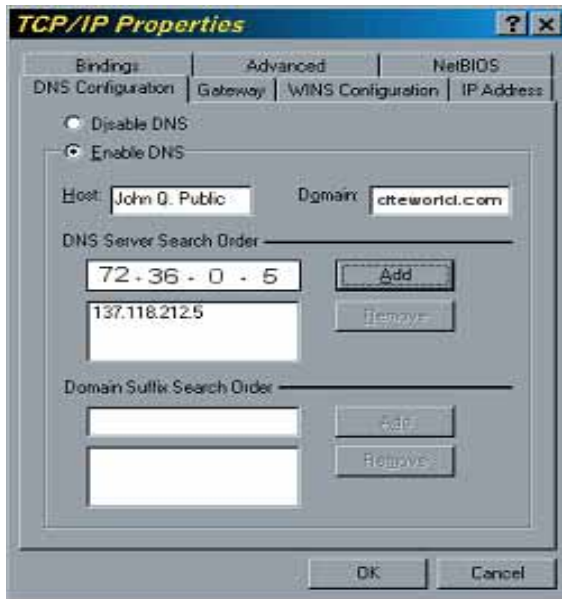
- This will open another window. Click the option labeled “Obtain an IP address automatically.”



8. Click on the tab labeled **“Gateway.”**
9. In section labeled **“Installed Gateways”** verify that there are none listed. If a “gateway” is listed, highlight and click the **“Remove”** button.

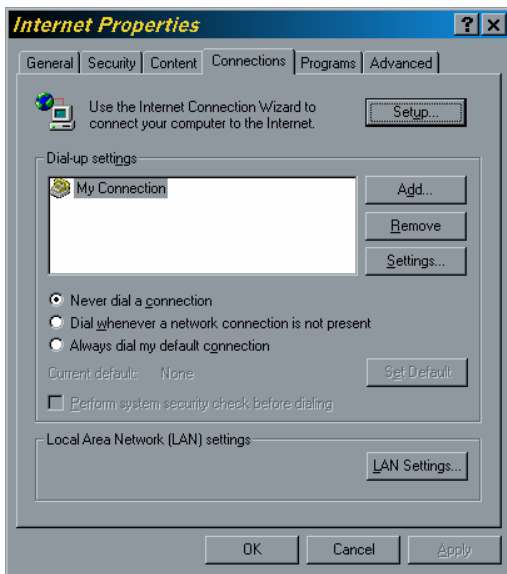


10. Click on the tab labeled **“DNS Configuration.”**



11. Make sure **“Enable DNS”** is selected.
12. In space labeled **“Host”** type your User ID as provided by DTE World.
13. In space labeled **“Domain”** type dteworld.com.
14. Type the following string of numbers into the appropriate location:
 - DNS Server Search Order: **72.0.36.5**
 - Click **“Add”**
 - DNS Server Search Order: **137.118.1.33**
 - Click **“Add”**

15. Click “**OK.**”
16. Click “**OK**” again.
17. At this point, you may be prompted to insert your Windows Installation CD. If so, please insert CD and follow prompts.
18. After the CD completes its process, you will be prompted to reboot your computer. Click “**Yes**” to reboot.
19. Once your machine boots back to Windows, double click on the “**Internet Explorer**” short cut on your computer.
20. Click the “**STOP**” button located in the tool bar at the top of your screen.
21. Click on “**Tools.**”
22. Click on “**Internet Options.**”
23. Click on the “**Connections**” tab.
24. Click on the button labeled “**Never dial a connection.**”
25. Click on “**OK.**”



26. Click the “**Refresh/Reload**” button or the “**Home**” button located in the tool bar at the top of your screen.

You are now surfing the information superhighway using DTEWORLD.COM’s DSL technology!